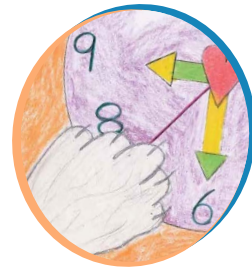
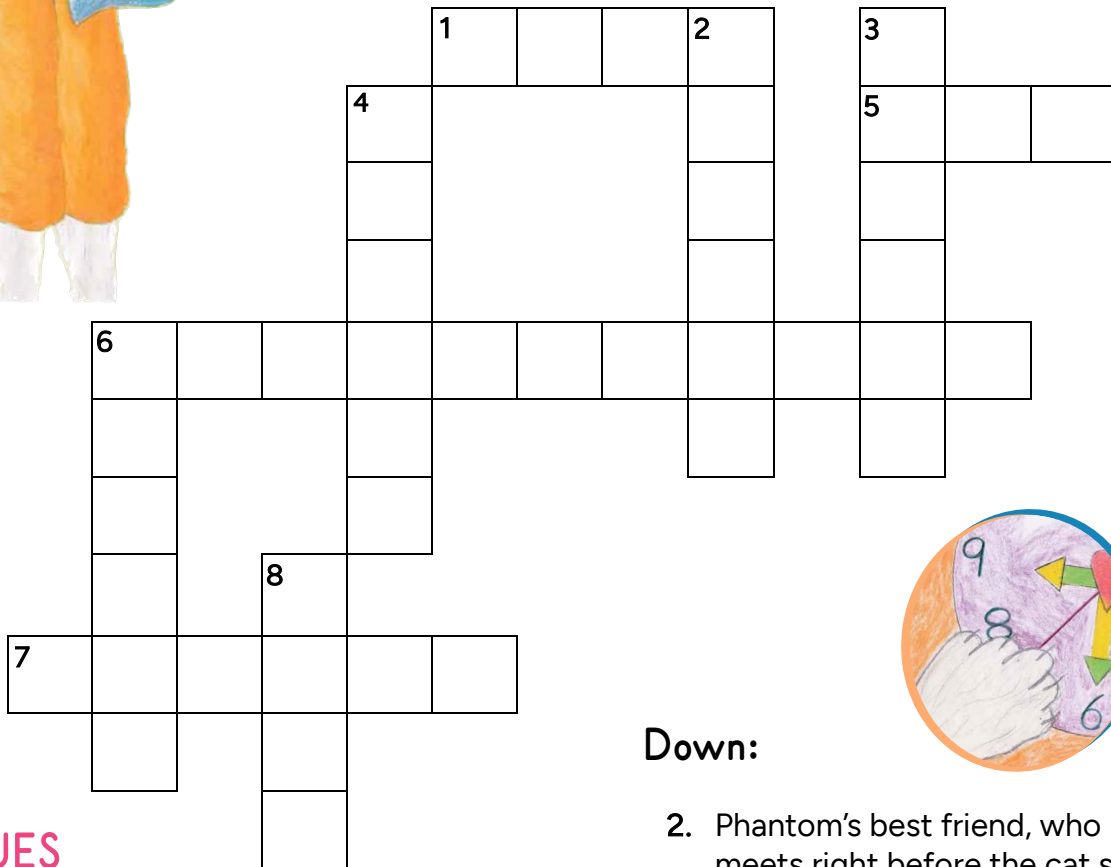




Second Hand Cat

Crossword

Adventurer Level



CLUES

Across:

1. By the end of the book, ____ is Phantom's favorite color. (Hint: page 39)
5. The clothing accessory that Maggie Mom loses at the cat show (Hint: page 25)
6. Phantom is _____ when he hides on his white blanket since he is hidden by blending in with his surroundings. (Hint: page 27)
7. Phantom's cheer, "You're clean and dried, puffed and _____" (Hint: pages 33-35)

Down:

2. Phantom's best friend, who he meets right before the cat show (Hint: pages 5, 13)
3. Location in which Maggie finds Phantom's hidden collection (Hint: page 45)
4. The clock hand that upsets Phantom the most (Hint: pages 37-39)
6. The cat show where Phantom and Kit Kat were adopted was held at the _____ center. (Hint: page 13)
8. One of Phantom's eyes is yellow and the other is _____. (Hint: page 1)

