



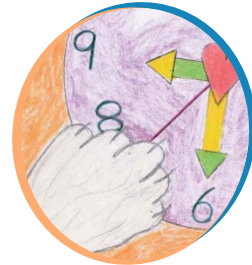
**ANSWER KEY**

# Second Hand Cat

## Crossword

All Levels

				<sup>1</sup> P	I	N	<sup>2</sup> K		<sup>3</sup> S			
			<sup>4</sup> S					I	<sup>5</sup> H	A	T	
			E					T	O			
			C					K	W			
	<sup>6</sup> C	A	M	O	U	F	L	A	G	E	D	
	O			N				T		R		
	U			D								
	N		<sup>8</sup> B									
<sup>7</sup> S	T	Y	L	E	D							
	Y		U									
			E									



**CLUES**

**Across:**

1. By the end of the book, \_\_\_\_ is Phantom's favorite color. (Hint: page 39)
5. The clothing accessory that Maggie Mom loses at the cat show (Hint: page 25)
6. Phantom is \_\_\_\_\_ when he hides on his white blanket since he is hidden by blending in with his surroundings. (Hint: page 27)
7. Phantom's cheer, "You're clean and dried, puffed and \_\_\_\_\_" (Hint: pages 33-35)

**Down:**

2. Phantom's best friend, who he meets right before the cat show (Hint: pages 5, 13)
3. Location in which Maggie finds Phantom's hidden collection (Hint: page 45)
4. The clock hand that upsets Phantom the most (Hint: pages 37-39)
6. The cat show where Phantom and Kit Kat were adopted was held at the \_\_\_\_\_ center. (Hint: page 13)
8. One of Phantom's eyes is yellow and the other is \_\_\_\_\_. (Hint: page 1)

